

# CLARKE<sup>®</sup>

## METALWORKER



**BENCH GRINDER WITH SANDING BELT**

**MODEL NO: CBG6SB**

PART NO: 6500032

**OPERATING & MAINTENANCE  
INSTRUCTIONS**

**UK  
CA** | **CE**



ORIGINAL INSTRUCTIONS

DL0323 -Rev 6

---

## INTRODUCTION

---

Thank you for purchasing this CLARKE Bench Grinder with sanding belt.

Before attempting to use this product, please read this manual thoroughly and follow the instructions carefully. In doing so you will ensure the safety of yourself and that of others around you, and you can look forward to your purchase giving you long and satisfactory service.

---

## GUARANTEE

---

This product is guaranteed against faulty manufacture for a period of 12 months from the date of purchase. Please keep your receipt which will be required as proof of purchase.

This guarantee is invalid if the product is found to have been abused or tampered with in any way, or not used for the purpose for which it was intended.

Faulty goods should be returned to their place of purchase, no product can be returned to us without prior permission.

This guarantee does not effect your statutory rights.

---

## ENVIRONMENTAL PROTECTION

---



Do not dispose of this product with general household waste. All tools, accessories and packaging should be sorted, taken to a recycling centre and disposed of according to the laws governing Waste Electrical and Electronic Equipment.

Through the purchase of this product, the customer is taking on the obligation to deal with the WEEE in accordance with the WEEE regulations in relation to the treatment, recycling & recovery and environmentally sound disposal of the WEEE.

In effect, this means that this product must not be disposed of with general household waste. It must be disposed of according to the laws governing Waste Electrical and Electronic Equipment (WEEE) at a recognised disposal facility.

---

# GENERAL SAFETY RULES

---



CAUTION: FAILURE TO FOLLOW THESE PRECAUTIONS COULD RESULT IN PERSONAL INJURY, AND/OR DAMAGE TO PROPERTY. PLEASE KEEP THESE INSTRUCTIONS IN A SAFE PLACE FOR FUTURE REFERENCE.

---

## WORK ENVIRONMENT

1. Keep the work area clean, tidy and well lit. Cluttered and dark areas invite accidents
2. Do not operate power tools in explosive atmospheres, such as in the presence of flammable liquids, gases or dust. Power tools create sparks which may ignite the dust or fumes.
3. Keep children and bystanders away while operating a power tool. Distractions can cause you to lose control.

## PERSONAL SAFETY

1. Stay alert, watch what you are doing and use common sense when operating a power tool. Do not use a power tool while you are tired or under the influence of drugs, alcohol or medication. A moment of inattention while operating power tools may result in personal injury.
2. Avoid accidental starting. Ensure the switch is in the off position before plugging in. Plugging in power tools that have the switch on invites accidents.
3. Do not overreach. Keep proper footing and balance at all times. This enables better control of the power tool in unexpected situations.
4. Dress properly. Do not wear loose clothing or jewellery. Keep your hair, clothing and gloves away from moving parts. Loose clothes, jewellery or long hair can be caught in moving parts.
5. Gloves, manufactured to the current European safety standards should be worn when operating grinding equipment.
6. Eye protection manufactured to the current European safety standards should be worn when operating grinding equipment. Eye protectors must provide protection from flying particles from the front and the side.

## GENERAL USE AND CARE OF POWER TOOLS

1. ALWAYS check for any damage or condition that could affect the grinder's operation. Any damaged part should be properly repaired.
2. NEVER use the grinder if it is defective or operating abnormally.

3. NEVER abuse the mains cable. Never yank the cable to disconnect it from the socket. Keep the cable away from sharp edges/hot surfaces.
4. NEVER carry out any alterations or modifications to this product.
5. NEVER wipe the machine clean with solvents. Wipe plastic parts with a soft cloth, slightly dampened with soapy water.
6. NEVER attempt any repairs yourself. If you have a problem with this product contact your local CLARKE dealer.
7. Do not use the tool for any purpose than that described in this manual.
8. Always maintain the tool with care. Keep it clean for the best and safest performance.
9. Do not force the power tool. Use the correct power tool for your application. The correct power tool will do the job better and safer at the rate which it was designed.
10. Do not use the power tool if the switch does not turn it on and off. Any power tool that cannot be controlled with the switch is dangerous and must be repaired.
11. Store idle tools out of the reach of children and do not allow persons unfamiliar with the power tool or these instructions to operate the power tool. Power tools are dangerous in the hands of untrained users.
12. Maintain power tools. Check for misalignment or binding of moving parts, breakage of parts and any other condition that may affect the power tools operation. If damaged, have the power tool repaired before use. Many accidents are caused by poorly maintained power tools.
13. Use the power tool and accessories in accordance with these instructions and in the manner intended for the particular type of power tool, taking into account the working conditions and the work to be performed. Use of the power tool for operations different from intended could result in a hazardous situation.

## **ELECTRICAL SAFETY**

1. Power tool plugs must match the outlet. Never modify the plug in any way. Do not use adapter plugs with earthed (grounded) power tools. Correct plugs and matching outlets will reduce the risk of electric shock.
2. Do not abuse the cable. Never use it for carrying, pulling or unplugging the power tool. Keep the cable away from heat, oil, sharp edges or moving parts. Damaged or entangled cables increase the risk of electric shock.
3. Do not expose power tools to rain or wet conditions. Water entering a power tool will increase the risk of electric shock. If operating the power tool in a damp location is unavoidable, use a residual current device (RCD) protected supply.

4. When operating a power tool outdoors, use an extension cable suitable for outdoor use. Use of a cable suitable for outdoor use reduces the risk of electric shock.

## **BELT/DISC SANDER SAFETY**

1. ALWAYS wear a dust mask when using this machine. Be aware that harmful or toxic dusts could be produced when sanding some woods.
2. ALWAYS use the table to support the workpiece.
3. ALWAYS check to ensure the attachments are secure before starting.
4. ALWAYS maintain a suitable clearance between table and sanding belt.
5. ALWAYS hold the workpiece firmly so that it cannot be torn from your hands
6. ALWAYS ensure that nails or foreign objects have been removed from a workpiece beforehand. Nails etc. will destroy the belt.
7. NEVER sand pieces which cannot be held firmly by hand.

## **GRINDING STONE SAFETY**

1. Check the speed of the grindstone before fitting to your grinder. Never use a stone with a rpm speed less than the rpm speed of your grinder.
2. The outside diameter and thickness of your accessories must be within the capacity rating of the power tool. The correct size accessories can be correctly guarded and controlled.
3. Never use a stone that is chipped, cracked or damaged. Fragments from a broken or damaged grinding stone can cause serious injury. Make sure that defective stones are destroyed and not used.
4. Bonded abrasive products are breakable and shall therefore be handled with utmost care. The use of damaged or improperly mounted or used abrasive products is dangerous and can cause serious injuries.
5. Always refer to the label for specified usage and observe the safety information. Do not use for purposes other than specified.
6. Always use the correct stone for it's intended task. Using the incorrect stone can cause serious injury.
7. Allow the stone and tool to do the work. Never force the workpiece against the stone as this could cause kickback and/or shatter the stone causing serious injury.
8. Never use a damaged grinding stone. Inspect the stone before each use for chips, cracks or excess wear. If the tool or accessory is dropped, inspect for damage or install a new accessory. After fitting the accessory, position yourself away from the plane of the rotating accessory and run the tool at full speed. damaged stones may break apart during this test.

9. Abrasive products shall be handled and transported with care. Abrasive products shall be stored in such a manner that they are not subjected to mechanical damage and harmful environmental influences.
10. Do not use separate reducing bushes or adapters to adapt large hole abrasive wheels. Do not force a stone onto a machine or alter the size of the arbor hole.

## BENCH GRINDER SAFETY WARNINGS

1. Hold a hand tool or blade being sharpened firmly to prevent loss of control.
2. Never install a abrasive flap wheel or sanding disc on this grinder.
3. Always replace a cracked grinding wheel immediately.
4. Never use damaged or incorrect grindstones. The stone and retaining fixtures were specially designed for your grinder, for optimum performance and safety of operation. Inspect the condition of the grinding stone before use and do not use if any damage is found.
5. Always use the tool rests to steady the workpiece, the torque of the spinning grinding wheel may pull the workpiece from your hands.
6. ALWAYS check for damaged parts. Before further use any part that is damaged should be carefully checked to determine if it would operate properly and perform its intended function. Check for misalignment or binding of moving parts, breakage of parts and any other condition that may affect the tool's operation. A part that is damaged should be properly repaired or replaced at an authorised service center. Following this rule will reduce the risk of electric shock, fire or serious injury.




**NOTE:** Bench grinders used in industrial environments may be subject to the The Provision and Use of Work Equipment regulations 1992 and/or the training requirement of The Abrasive Wheels Regulations 1970), or other legislation. If in doubt seek advice

---

## SAFETY SYMBOLS

---

The meanings of the markings and symbols on the product are shown below

|   |   |   |   |
|---|---|---|---|
|  | Read this manual before use and keep in a safe place for future reference |  | Wear eye protection when using this tool. |
|  | Gloves should be worn when grinding.                                      |  | Wear dust mask.                           |

# ELECTRICAL CONNECTIONS



**WARNING! READ THESE ELECTRICAL SAFETY INSTRUCTIONS THOROUGHLY BEFORE CONNECTING THE PRODUCT TO THE MAINS SUPPLY.**

Before switching the product on, make sure that the voltage of your electricity supply is the same as that indicated on the rating plate. This product is designed to operate on 230VAC 50Hz. Connecting it to any other power source may cause damage.


This product may be fitted with a non-rewireable plug. If it is necessary to change the fuse in the plug, the fuse cover must be refitted. If the fuse cover becomes lost or damaged, the plug must not be used until a suitable replacement is obtained.

If the plug has to be changed because it is not suitable for your socket, or due to damage, it should be cut off and a replacement fitted, following the wiring instructions shown below. The old plug must be disposed of safely, as insertion into a mains socket could cause an electrical hazard.

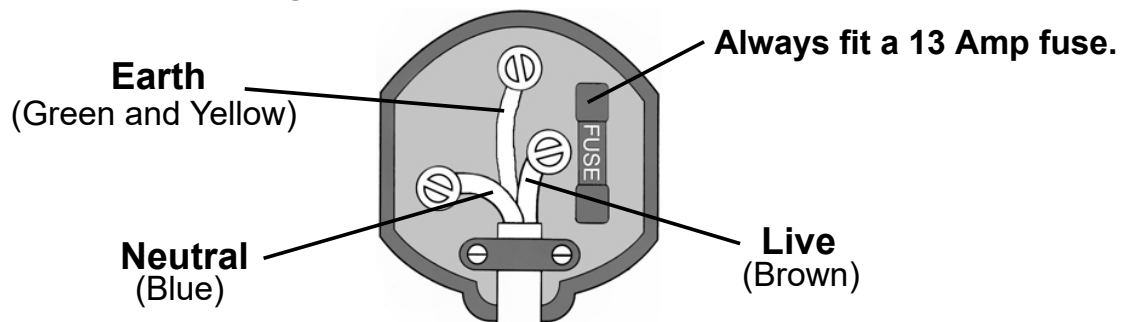


**WARNING! THE WIRES IN THE POWER CABLE OF THIS PRODUCT ARE COLOURED IN ACCORDANCE WITH THE FOLLOWING CODE: BLUE = NEUTRAL BROWN = LIVE YELLOW AND GREEN = EARTH**

If the colours of the wires in the power cable of this product do not correspond with the markings on the terminals of your plug, proceed as follows.

- The **Blue** wire must be connected to the terminal marked **N** or coloured **Black**.
- The **Brown** wire must be connected to the terminal marked **L** or coloured **Red**.
- The **Yellow and Green** wire must be connected to the terminal marked **E** or  or coloured **Green**.

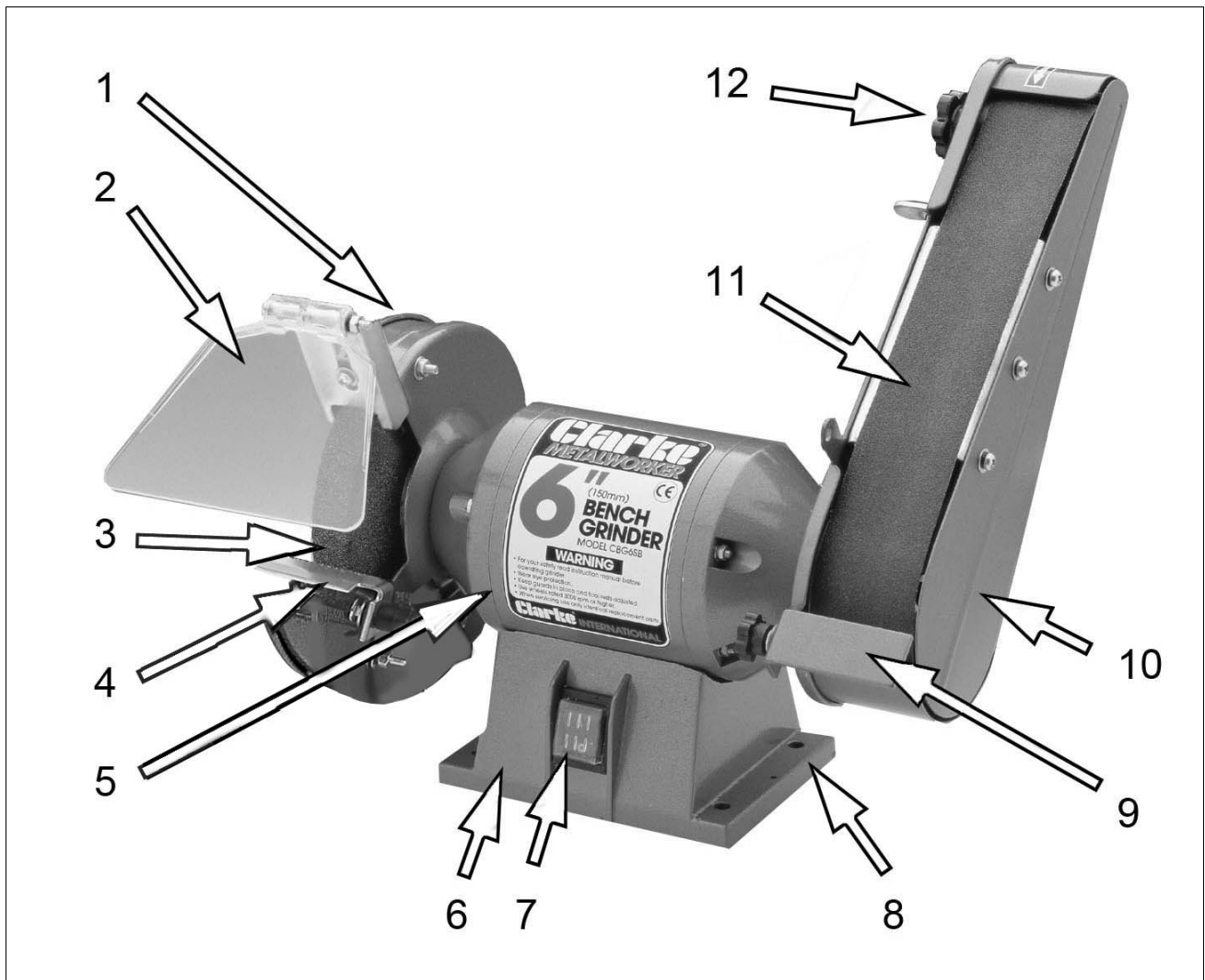
**Plug must be BS1363/A approved.**



**Ensure that the outer sheath of the cable is firmly held by the clamp**

We strongly recommend that this machine is connected to the mains supply via a Residual Current Device (RCD). If in any doubt, consult a qualified electrician. DO NOT attempt any repairs yourself.

# OVERVIEW



| No | Description               |
|----|---------------------------|
| 1  | Grinding Wheel Cover      |
| 2  | Eye Shield/Spark Arrester |
| 3  | Grinding Wheel            |
| 4  | Tool Rest                 |
| 5  | Motor Housing             |
| 6  | Base                      |

| No | Description              |
|----|--------------------------|
| 7  | On/Off Switch            |
| 8  | Bench Mounting Holes     |
| 9  | Sander Work Rest         |
| 10 | Sanding Belt Cover       |
| 11 | Sanding Belt             |
| 12 | Top Roller Securing Knob |

The items above should be supplied with the grinder. If any items are missing or damaged, please contact the Clarke dealer where you purchased the product.

Position the machine in good light, and fixed to a suitable workbench using the boltholes in the machine base.



---

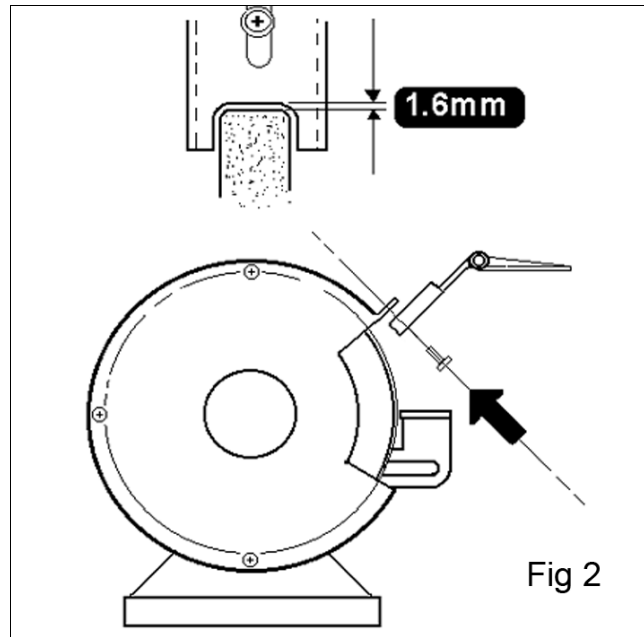
## ASSEMBLY

---

Except for the spark arrester and the eye shield, the bench grinder comes fully assembled. Screw the spark arrester to the bracket on the wheel cover using the single screw provided, ensuring a gap of 1.6mm is maintained between the wheel and the spark arrester, as shown in fig 2.

The following checks must be made before using the grinder or sander.

1. Ensure there is no damage to the grinder and all parts are present and correctly fitted. If any damage is apparent, contact your Clarke dealer.
2. Ensure that the tool rest, spark arrester, and sander work rest are properly fitted and adjusted.
3. Ensure that the bench grinder is mounted securely to a suitable, stable work surface using the four bolt holes provided in the base. We recommend that your Clarke Bench Grinder is secured to your workbench before operation. Do not overtighten the mounting bolts as this could damage the plastic base.



---

## USING THE MACHINE

---



**WARNING: APPLYING EXCESSIVE FORCE TO THE GRINDING WHEEL CAN BE DANGEROUS AND COULD CAUSE DAMAGE TO THE MACHINE. NEVER ATTEMPT TO USE THE SIDE OF THE GRINDING WHEEL.**

---

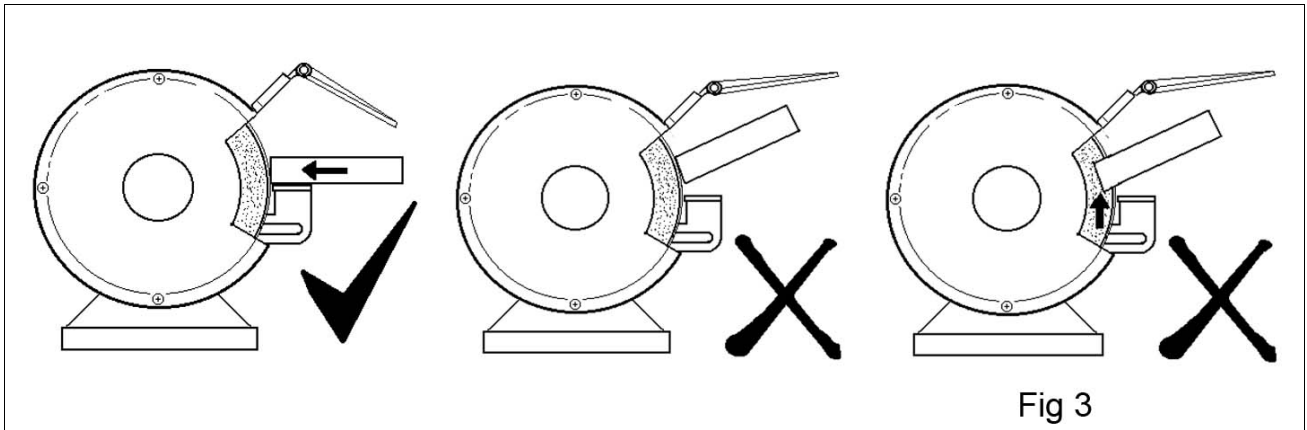
### USING THE GRINDING WHEEL

Although the unit is supplied assembled, there is a possibility that the guards may have moved during transit. Check the guards, and make any adjustments necessary before starting the motor.

1. Turn the grinding wheel by hand to ensure it is free, then switch ON by pushing the switch so that the "I" is depressed. To switch OFF push the switch so that the "0" is depressed.

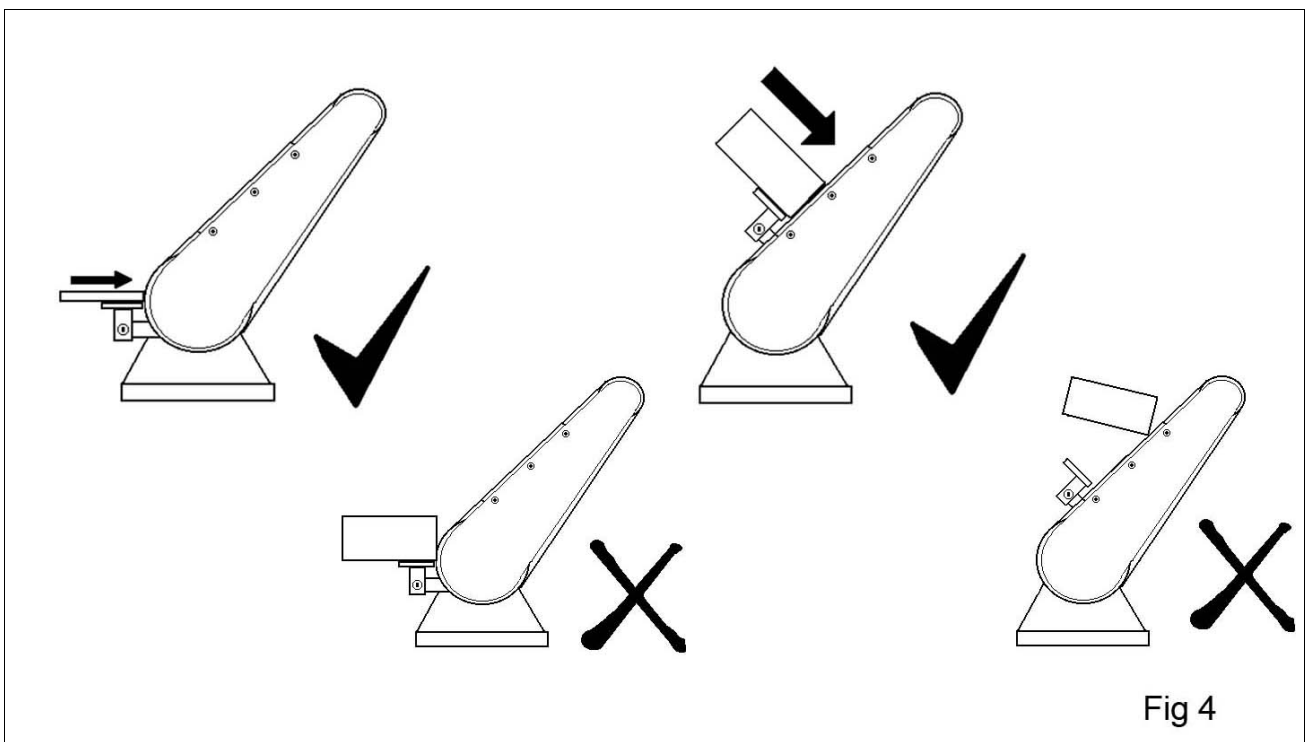
2. Allow the machine to reach full speed, then hold the tool firmly on the tool rest and apply slight pressure on to the grinding wheel, allowing the grinder to do the work.

**NOTE:** Never attempt to grind a piece of metal that is thinner than the gap between the tool rest and the grinding wheel (1.6 mm).



## USING THE SANDING BELT

1. Position the sander work rest as required (see fig. 4) and adjust as described on page 12.
2. Switch the motor ON by pushing the switch so that the "I" is depressed, and allow the machine to reach full speed. To switch the motor OFF push the switch so that the "0" is depressed.
3. Hold the workpiece firmly on the work rest and apply slight pressure to the sanding belt, allowing the machine to do the work.



# USING YOUR GRINDER



**WARNING: FRAGMENTS FROM A BROKEN/DETACHED GRINDING WHEEL CAN CAUSE INJURY.**

**WARNING: ENSURE THAT THE WORKING POSITION ADOPTED DOES NOT CAUSE OPERATOR FATIGUE WHICH MAY LEAD TO LOSS OF CONTROL OF THE TOOL BEING GROUND.**

**WARNING: THE GRINDING WHEEL WILL CONTINUE TO ROTATE BRIEFLY AFTER THE OFF SWITCH HAS BEEN PRESSED.**

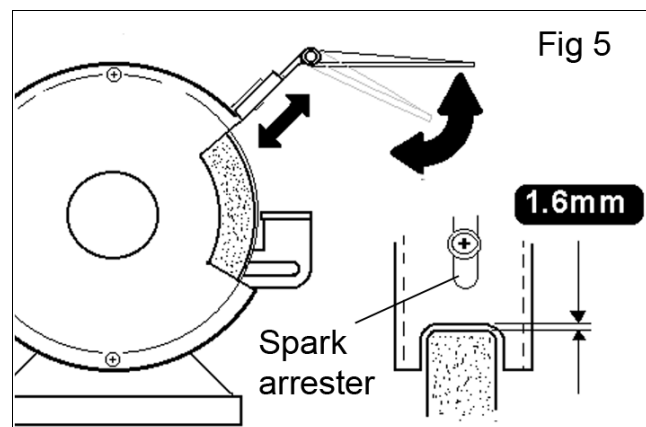
## GENERAL USE

1. To start/stop the grinder, press the ON/OFF switch and start work.
2. Press the tool blade evenly onto the grinding stone and move the tool sideways across the stone. Make sure that at least half the width of the tool cutting edge comes into contact with the grinding stone at any time to avoid damage to the stone.
3. Allow the machine to do the work. Do not apply excessive downward pressure on the tool when grinding.

## SETTING THE EYE SHIELD AND SPARK ARRESTER

Slacken the spark arrestor securing screw and position the arrestor so that the recess is adjacent to the wheel with a clearance of approximately 1.6 mm, (as shown in fig (5)). Tighten the screw to secure in position.

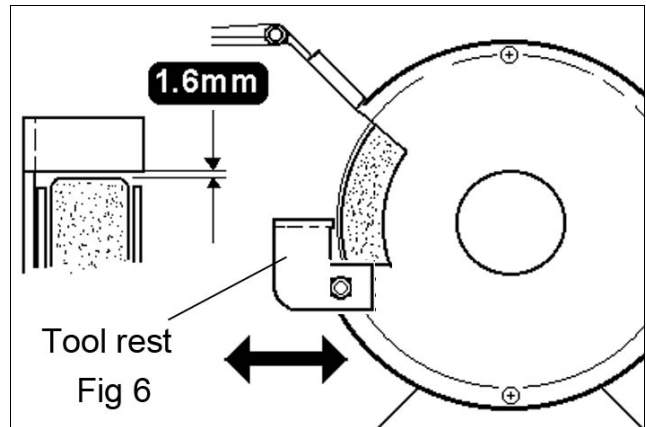
The plastic eye shield, attached to the spark arrestor, should be tight enough so that it does not move under operational vibration, but loose enough so that it may easily be positioned by hand.



## SETTING THE TOOLREST

Slacken the two tool rest securing bolts and position the rest so that it is adjacent to the grinding wheel with a clearance of approximately 1.6 mm, (as shown in fig (6)). Tighten the two bolts to secure in position.

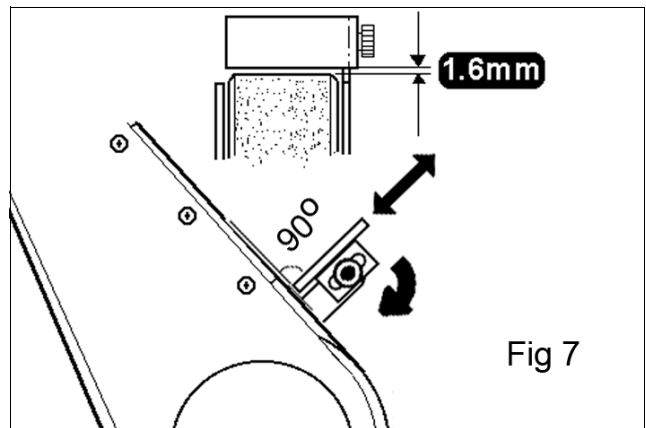
The clearance between the grinding wheel and tool rest should be maintained. If the clearance gap is greater than the thickness of the metal being ground there is a danger that the force of grinding will cause the work piece to be pulled into the gap with great force and is potentially very dangerous. An incorrect gap could also cause "chatter" which could result in damage to the wheel.



## SETTING THE SANDER WORK REST

Slacken the knob that secures the work rest in place and position the rest so that it is adjacent to the belt edge and at 90 degrees to the belts surface with approximately 1.6 mm clearance, as shown in fig (7). Tighten the knob to secure in position.

- It is recommended that a set square is used to set the 90 degree angle. This will ensure an accurate square finish when the workpiece is placed on the rest.



---

## MAINTENANCE

---

### GENERAL MAINTENANCE

Make sure that all components are tight and secure. Always have any damaged or worn parts repaired or replaced by qualified service personnel. Do not attempt to repair the bench grinder unless you are qualified to do so.

The drive motor and bearings are sealed units and require no regular maintenance. Should you require assistance, contact your local Clarke service agent.

The grinding stone will wear down with use and may well go out of true. Use a dressing wheel or stone grader to correct the trueness and to remove worn, glazed grains from the stone.

The stone will have a finite life expectancy, dependant upon the nature of the work being done. Periodically, make a note of the wheel diameter and replace your (150mm) dia wheel if it reduces to an little as (130mm) in diameter.

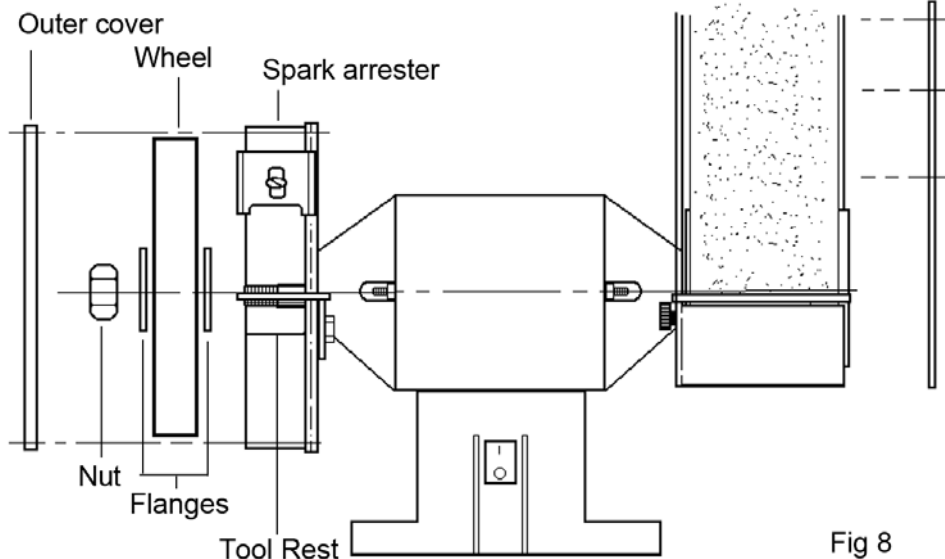
## INSTALLING A NEW GRINDING WHEEL



**WARNING: NEVER OPERATE THE GRINDING WHEEL WITHOUT THE GUARDS FITTED IN POSITION.**

To renew or change the grinding wheels, proceed as follows

1. Switch off and un-plug from power supply. Remove the grinding wheel covers by unscrewing the nuts securing the three retaining screws.
2. Remove the spark arrester bracket and eye shield by unscrewing the single mounting screw. Slacken the tool rest mounting bolts, and pull the bracket away from the wheel.
3. Hold the sanding belt roller firmly to stop the shaft rotating and remove the nut and flange holding the grinding wheel, remembering that the nut has a LEFT HAND THREAD.
4. Remove the used wheel and replace with a new one, ensuring that:
  - The paper blotters and flanges are in place either side of the wheel.
  - You do not overtighten the wheel nut.
5. Refit the grinding wheel covers by using the nuts and the three retaining screws. Re-adjust the tool rest and spark arrester brackets.
6. Switch the machine on and allow it to rotate freely for at least one minute.

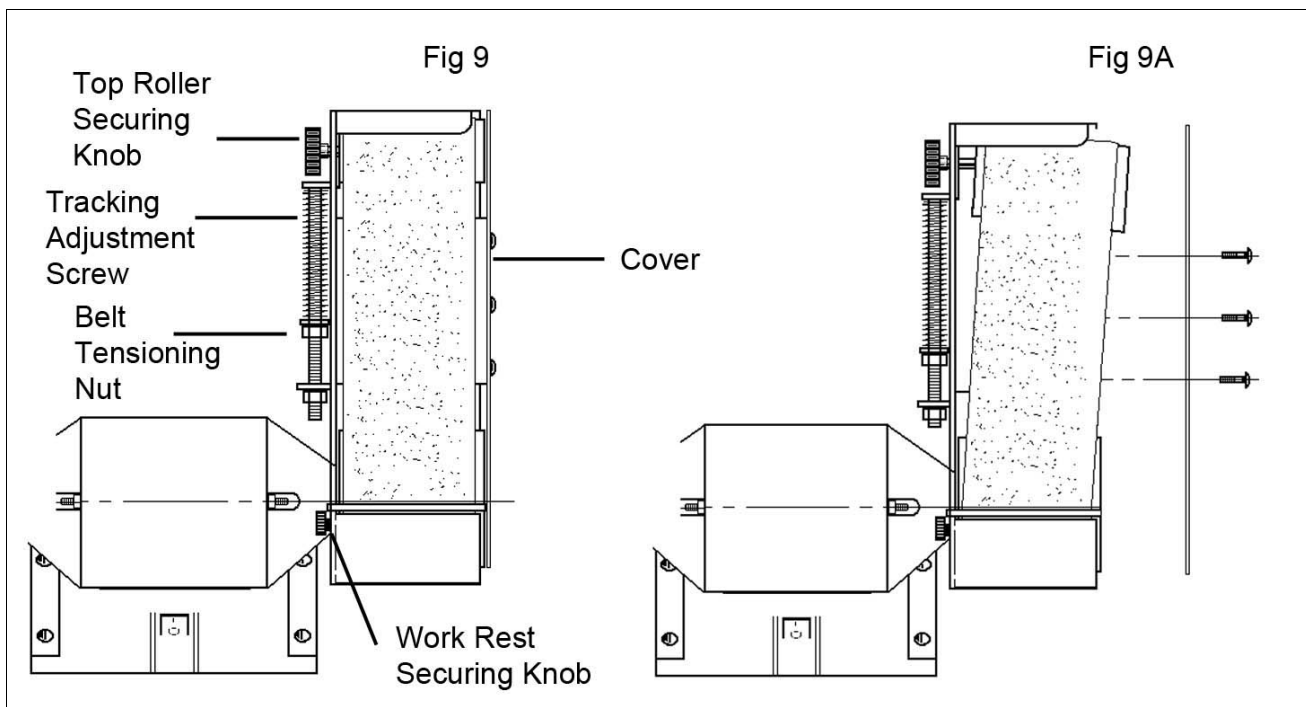


## DRESSING A NEW STONE

New grinding stones are frequently not true or in time can become grooved, glazed (built-up), out of round or otherwise mis-shapen. To correct these defects, a grinding stone dresser is available from your Clarke dealer.

- ET125 Grinding Wheel Dresser - Part No:1700225
  - Replacement Dresser Wheel - Part No:1700230
  - ET154 ½ Carat Diamond Tip Wheel Dresser - part No:1700329
1. If the grinding stone is new, allow it to spin for a minute with no load. Check that it is spinning straight and true. If not, it will require dressing before use.
  2. Stand to the side of the stone and hold the dresser handle firmly. Place the dresser on the tool support so that its wheels can move freely (i.e, the exposed part of the wheel should be facing up). Run the stone and apply the dresser to the surface of the stone.

## CHANGING THE SANDING BELT



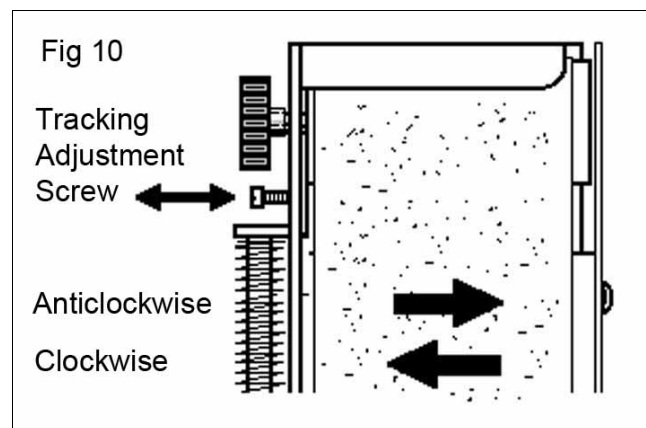
To renew or change the sanding belt, proceed as follows:

1. Unplug from the power supply. Remove the sander cover by unscrewing the three securing screws.
2. Slacken the sander work rest securing knob, and pull the work rest away from the belt.
3. Slacken the belt tensioning nut until the belt feels loose on the rollers.
4. Slacken the top roller securing knob, allowing the top roller to move slightly off its axis as shown in fig 9a.

5. Slide the belt off and replace with a new one, ensuring it lies centrally on the top and bottom rollers
6. Retighten the top roller securing knob till it becomes firm but NOT too tight.
7. Tighten the belt tension adjuster nut until it also becomes firm. DO NOT overtighten. The belt should now be fairly taught and positioned centrally on the rollers.

**IMPORTANT: The belt needs just enough tension to ensure that it does not slip on the rollers whilst under load, however too much tension will shorten the working life of the belt and the machine.**

8. Replace the sanding belt cover, then adjust and tighten the work rest.
9. Rotate the belt by hand whilst screwing the Tracking Adjustment screw in or out to ensure the belt runs centrally on the rollers. Turn the screw anticlockwise to move the belt outwards (towards the outer cover), or clockwise to move inwards.
10. When satisfied, plug the machine into the power supply and switch ON. Make fine adjustments with the Tracking Adjustment screw if necessary.



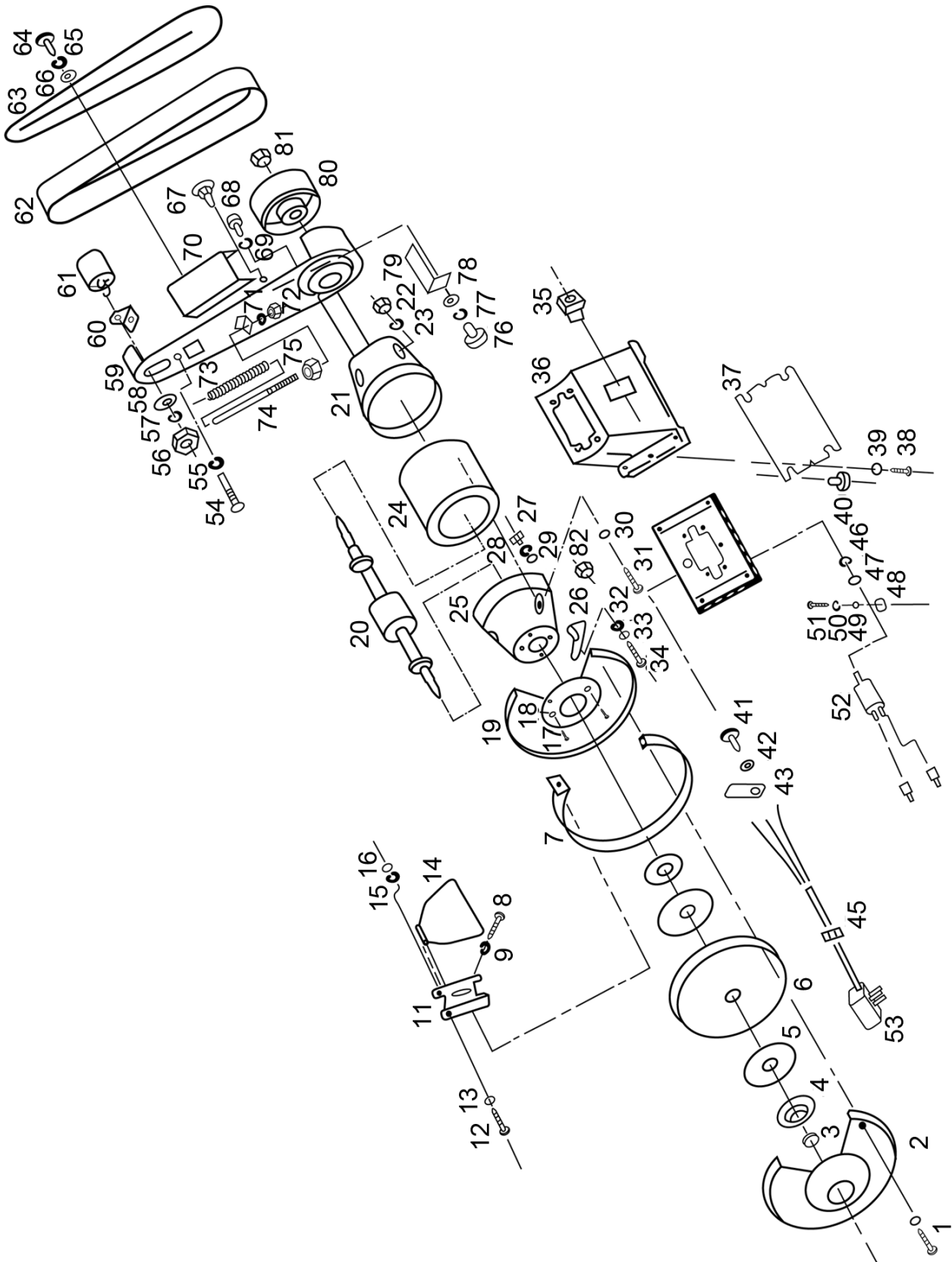
## CLEANING & STORAGE

Clean the exterior of the machine if required using a mild detergent or mild solvent. Never immerse the machine in water. To reduce any fire hazard, keep any cooling vents clear. If not bolted to a workbench, store the grinder in a clean, dry location, out of reach of children.

## ACCESSORIES

| Description                         | Part No |
|-------------------------------------|---------|
| Grinding Wheel - Fine               | 6501135 |
| Grinding Wheel - Medium             | 6501089 |
| Grinding Wheel - Course             | 6501088 |
| Grinding Wheel Dressing Tool - GWD1 | 6501120 |
| Sanding Belts - Fine (pack of 5)    | 6502115 |
| Sanding Belts - Medium (pack of 5)  | 6502120 |
| Sanding Belts - Course (pack of 5)  | 6502125 |
| Bench Grinder Stand                 | 6501140 |

# COMPONENT PARTS DIAGRAM





## COMPONENT PARTS LIST

| No | Description    | Part No  |
|----|----------------|----------|
| 1  | Bolt           | HT6SB001 |
| 2  | Outer Guard    | HT6SB002 |
| 3  | Nut            | HT6SB003 |
| 4  | Flange         | HT6SB004 |
| 5  | Paper Blotter  | HT6SB005 |
| 6  | Wheel          | HT6SB006 |
| 7  | Ring Guard     | HT6SB007 |
| 8  | Screw          | HT6SB008 |
| 9  | Spring Washer  | HT6SB009 |
| 10 | Washer         | HT6SB010 |
| 11 | Spark Arrester | HT6SB011 |
| 12 | Bolt           | HT6SB012 |
| 13 | Washer         | HT6SB013 |
| 14 | Eyeshield      | HT6SB014 |
| 15 | Spring Washer  | HT6SB015 |
| 16 | Nut            | HT6SB016 |
| 17 | Screw          | HT6SB017 |
| 18 | Spring Washer  | HT6SB018 |
| 19 | Inner Guard    | HT6SB019 |
| 20 | Rotor          | HT6SB020 |
| 21 | Motor Cover    | HT6SB021 |
| 22 | Nut            | HT6SB022 |
| 23 | Spring Washer  | HT6SB023 |
| 24 | Stator         | HT6SB024 |
| 25 | Motor Cover    | HT6SB025 |
| 26 | Tool Rest      | HT6SB026 |
| 27 | Bolt           | HT6SB027 |
| 28 | Spring Washer  | HT6SB028 |
| 29 | Washer         | HT6SB029 |
| 30 | Spring Washer  | HT6SB030 |

| No | Description       | Part No  |
|----|-------------------|----------|
| 31 | Bolt              | HT6SB031 |
| 32 | Washer            | HT6SB032 |
| 33 | Spring Washer     | HT6SB033 |
| 34 | Screw             | HT6SB034 |
| 35 | Switch            | HT6SB035 |
| 36 | Base              | HT6SB036 |
| 37 | Base Plate        | HT6SB037 |
| 38 | Screw             | HT6SB038 |
| 39 | Tooth Washer      | HT6SB039 |
| 40 | Rubber feet       | HT6SB040 |
| 41 | Screw             | HT6SB041 |
| 42 | Spring Washer     | HT6SB042 |
| 43 | Cable Clamp       | HT6SB043 |
| 44 | N/A               | N/A      |
| 45 | Cable Sleeve      | HT6SB045 |
| 46 | Nut               | HT6SB046 |
| 47 | Tooth Washer      | HT6SB047 |
| 48 | Capacitor Bracket | HT6SB048 |
| 49 | Washer            | HT6SB049 |
| 50 | Spring Washer     | HT6SB050 |
| 51 | Screw             | HT6SB051 |
| 52 | Capacitor         | HT6SB052 |
| 53 | Plug Cable        | HT6SB053 |
| 54 | Screw             | HT6SB054 |
| 55 | Nut               | HT6SB055 |
| 56 | Knob              | HT6SB056 |
| 57 | Spring Washer     | HT6SB057 |
| 58 | Washer            | HT6SB058 |
| 59 | Belt Cover        | HT6SB059 |
| 60 | Bracket           | HT6SB060 |

## COMPONENT PARTS LIST

| No | Description          | Part No  | No | Description   | Part No  |
|----|----------------------|----------|----|---------------|----------|
| 61 | Top Roller           | HT6SB061 | 72 | Nut           | HT6SB072 |
| 62 | Belt (5-pack)        | HT6SB062 | 73 | Spring        | HT6SB073 |
| 63 | Outer cover          | HT6SB063 | 74 | Spring Pin    | HT6SB074 |
| 64 | Screw                | HT6SB064 | 75 | NUt           | HT6SB075 |
| 65 | Spring Washer        | HT6SB065 | 76 | Knob          | HT6SB076 |
| 66 | Washer               | HT6SB066 | 77 | Spring Washer | HT6SB077 |
| 67 | Square Neck Screw    | HT6SB067 | 78 | Washer        | HT6SB078 |
| 68 | Screw                | HT6SB068 | 79 | Tool Rest     | HT6SB079 |
| 69 | Spring Washer        | HT6SB069 | 80 | Drive Roller  | HT6SB080 |
| 70 | Belt Support Bracket | HT6SB070 | 81 | Nut           | HT6SB081 |
| 71 | Spring Washer        | HT6SB071 | 82 | Knob          | n/a      |

## SPECIFICATIONS

| Feature                   | Value                                    |
|---------------------------|--|
| Overall Dimensions (mm)   | 340 (H) x 300 (W) x 340 (D)              |
| Weight                    | 8.9 kg                                   |
| Grinding Stone Dimensions | 150 dia x 20 mm thickness (12.7 mm bore) |
| Rated Voltage / Frequency | 230 V / 50 Hz                            |
| Motor Wattage             | 240 W                                    |
| No Load Speed             | 2950 rpm                                 |
| Duty Cycle Classification | S2 (30 minutes on in any 60 minutes)     |
| No load belt speed        | 15.5 m/s                                 |
| Belt Length               | 686 mm                                   |
| Belt Width                | 50 mm                                    |

# DECLARATION OF CONFORMITY



Hennell Street, Epping, Essex, CM16 4LG

## DECLARATION OF CONFORMITY

This is an important document and should be retained.

We hereby declare that this product(s) complies with the following legislation:

- The Electromagnetic Compatibility Regulations 2016
- The Supply of Machinery (Safety) Regulations 2008
- The Restriction of the Use of Certain Hazardous Substances in Electrical and Electronic Equipment Regulations 2012

The following standards have been applied to the product(s):

- EN 55014-1:2017, EN 55014-2:2015, EN IEC 61000-3-2:2019, EN 61000-3-3:2013,
- EN 62841-1:2015, IEC 62321-1:2013, IEC 62321-2:2013, IEC 62321-3-1:2013,
- IEC 62321-4:2013+AMD1:2017 CSV, IEC 62321-5:2013, IEC 62321-6:2015, IEC 62321-7-1:2015,
- IEC 62321-7-2:2017, IEC 62321-8:2017, ISO 17075:2017

The technical documentation required to demonstrate that the product(s) meet(s) the requirement(s) of the aforementioned legislation has been compiled and is available for inspection by the relevant enforcement authorities.

The UKCA mark was first applied in: 2023

Product Description: Bench Grinder  
Model Number(s): CBG6SB  
Serial/Batch Number: Refer to product/package label  
Date of Issue: 22/03/2023

Signed:

J.A. Clarke  
Director

CBG6SB UKCA Clarke DOC 032223

Page 1 of 1



Fitzwilliam Hall, Fitzwilliam Place, Dublin 2

## DECLARATION OF CONFORMITY

This is an important document and should be retained.

We hereby declare that this product(s) complies with the following legislation:

- 2014/30/EU Electromagnetic Compatibility Directive
- 2006/42/EC Machinery Directive
- 2011/65/EU Restriction of Hazardous Substances (RoHS) Directive

The following standards have been applied to the product(s):

- EN 55014-1:2017, EN 55014-2:2015, EN IEC 61000-3-2:2019, EN 61000-3-3:2013,
- EN 62841-1:2015, IEC 62321-1:2013, IEC 62321-2:2013, IEC 62321-3-1:2013,
- IEC 62321-4:2013+AMD1:2017 CSV, IEC 62321-5:2013, IEC 62321-6:2015, IEC 62321-7-1:2015,
- IEC 62321-7-2:2017, IEC 62321-8:2017, ISO 17075:2017

The technical documentation required to demonstrate that the product(s) meet(s) the requirement(s) of the aforementioned legislation has been compiled and is available for inspection by the relevant enforcement authorities.

The CE mark was first applied in: 2001

Product Description: Bench Grinder  
Model Number(s): CBG6SB  
Serial/Batch Number: Refer to product/package label  
Date of Issue: 22/03/2023

Signed:

J.A. Clarke  
Director

CBG6SB CE Clarke DOC 032223

Page 1 of 1

# A SELECTION FROM THE VAST RANGE OF

# Clarke®

## QUALITY PRODUCTS



### **AIR COMPRESSORS**

From DIY to industrial, Plus air tools, spray guns and accessories.

### **GENERATORS**

Prime duty or emergency standby for business, home and leisure.

### **POWER WASHERS**

Hot and cold, electric and engine driven - we have what you need

### **WELDERS**

Mig, Arc, Tig and Spot. From DIY to auto/industrial.

### **METALWORKING**

Drills, grinders and saws for DIY and professional use.

### **WOODWORKING**

Saws, sanders, lathes, mortisers and dust extraction.

### **HYDRAULICS**

Cranes, body repair kits, transmission jacks for all types of workshop use.

### **WATER PUMPS**

Submersible, electric and engine driven for DIY, agriculture and industry.

### **POWERTOOLS**

Angle grinders, cordless drill sets, saws and sanders.

### **STARTERS/CHARGERS**

All sizes for car and commercial use.

# **PARTS & SERVICE: 0208 988 7400**

---

**Parts Enquiries**  
[Parts@clarkeinternational.com](mailto:Parts@clarkeinternational.com)

---

**Servicing & Technical Enquiries**  
[Service@clarkeinternational.com](mailto:Service@clarkeinternational.com)

---

SALES: UK 01992 565333 or Export 00 44 (0)1992 565335

**Clarke** INTERNATIONAL Hemnall Street, Epping, Essex CM16 4LG  
[www.clarkeinternational.com](http://www.clarkeinternational.com)